

# Flower Shower

Designed by Wendy Sheppard  
Featuring Sweet Florals by Another Point of View

SIZE: 85-1/2" x 85-1/2"

FREE  
PROJECT



**THIS IS A DIGITAL REPRESENTATION OF THE QUILT TOP, FABRIC MAY VARY.**

**PLEASE NOTE:** BEFORE MAKING YOUR PROJECT, CHECK FOR ANY PATTERN UPDATES AT [WINDHAMFABRICS.COM](http://WINDHAMFABRICS.COM)'S FREE PROJECTS SECTION.



# Flower Shower

KEY	FABRIC	SKU	YD	CUTTING INSTRUCTIONS
A		32034-18	5 1/4	(15) 1 1/2" x WOF. Subcut (384) 1 1/2" x 1 1/2" squares. (28) 5" x WOF. Subcut (320) 3 1/2" x 5" rectangles and cut 1 #2 and 1 #3 piece from each rectangle using provided templates. (1) 4" x WOF. Subcut (4) 4" x 4" squares. Inner border #1 Widthwise, (8) 2" x WOF. Piece strips and subcut (2) 2" x 71 1/2" and (2) 2" x 74 1/2" strips.
B		42978-1	1	(2) 1 7/8" x WOF. Subcut (36) 1 7/8" x 1 7/8" squares. Cut squares diagonally once to yield (72) half-square-triangles. (4) 1 1/2" x WOF. Subcut (36) 1 1/2" x 4" rectangles. Remaining fabric, cut (36) #1 pieces from provided template.
C		42978-2	1 3/8	Outer border: (8) 5 1/2" x WOF. Piece strips and subcut (2) 5 1/2" x 76" and (2) and 5 1/2" x 86" strips.
D		42979-2	1/2	(1) 1 7/8" x WOF. Subcut (16) 1 7/8" x 1 7/8" squares. Cut squares diagonally once to yield (32) half-square-triangles. (2) 1 1/2" x WOF. Subcut (16) 1 1/2" x 4" pieces. From remaining fabric, cut (16) #1 pieces from provided template.
E		42979-3	1/2	(1) 1 7/8" x WOF. Subcut (16) 1 7/8" x 1 7/8" squares. Cut squares diagonally once to yield (32) half-square-triangles. (2) 1 1/2" x WOF. Subcut (16) 1 1/2" x 4" pieces. From remaining fabric, cut (16) #1 pieces from provided template.
F		42980-4	3/4	(2) 1 7/8" x WOF. Subcut (24) 1 7/8" x 1 7/8" squares. Cut squares diagonally once to yield (48) half-square-triangles. (1) 4" x WOF. Subcut (22) 1 1/2" x 4" rectangles. From remaining fabric, cut (24) #1 pieces from provided template.
G		42980-5	1 1/4	(3) 1 7/8" x WOF. Subcut (46) 1 7/8" x 1 7/8" squares. Cut squares diagonally once to yield (92) half-square-triangles. (5) 1 1/2" x WOF. Subcut (41) 1 1/2" x 4" rectangles. From remaining fabric, cut (46) #1 pieces from provided template.



# Flower Shower

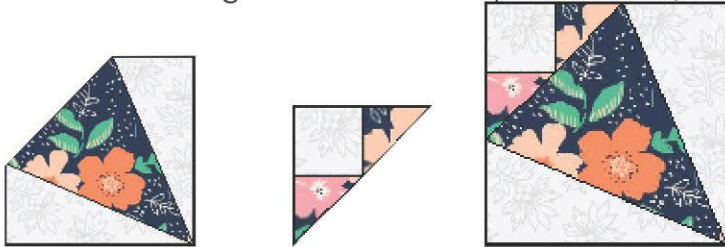
<b>H</b>		42981-5	5/8	(1) 1 7/8" x WOF. Subcut (22) 1 7/8" x 1 7/8" squares. Cut squares diagonally once to yield (44) half-square-triangles. (2) 1 1/2" x WOF. Subcut (19) 1 1/2" x 4" rectangles. From remaining fabric, cut (22) #1 pieces from provided template.
<b>I</b>		42981-6	1	(2) 1 7/8" x WOF. Subcut (34) 1 7/8" x 1 7/8" squares. Cut squares diagonally once to yield (68) half-square-triangles. (3) 1 1/2" x WOF. Subcut (29) 1 1/2" x 4" rectangles. From remaining fabric, cut (34) #1 pieces from provided template.
<b>J</b>		42982-1	5/8	(1) 1 7/8" x WOF. Subcut (20) 1 7/8" x 1 7/8" squares. Cut squares diagonally once to yield (40) half-square-triangles. (2) 1 1/2" x WOF. Subcut (16) 1 1/2" x 4" rectangles. From remaining fabric, cut (20) #1 pieces from provided template.
<b>K</b>		42982-3	3/8	Inner border #2: (8) 1 1/4" x WOF. Piece strips and subcut (2) 1 1/4" x 74 1/2" and (2) 1 1/4" x 76" strips.
<b>L</b>		42982-7	1	(2) 1 7/8" x WOF. Subcut (36) 1 7/8" x 1 7/8" squares. Cut squares diagonally once to yield (72) half-square-triangles. (4) 1 1/2" x WOF. Subcut (32) 1 1/2" x 4" rectangles. From remaining fabric, cut (36) #1 pieces from provided template.
<b>M</b>		42983-1	1/2	(1) 1 7/8" x WOF. Subcut (12) 1 7/8" x 1 7/8" squares. Cut squares diagonally once to yield (24) half-square-triangles. (1) 1 1/2" x WOF. Subcut (10) 1 1/2" x 4" rectangles. From remaining fabric, cut (12) #1 pieces from provided template.
<b>N</b>		42983-3	1 3/8	(3) 1 7/8" x WOF. Subcut (58) 1 7/8" x 1 7/8" squares. Cut squares diagonally once to yield 116 half-square-triangles. (2) 4" x WOF. Subcut (51) 1 1/2" x 4" rectangles. (58) #1 pieces from provided template
<b>O</b>		42984-5	5/8	(8) 2 1/4" x WOF for binding
		Backing* 108" Wide Back	2 3/4	
				91" x 91" Piece of batting



# Flower Shower

## Constructing Whole Pieced Blocks

1. Quadrant units. Sew #2 and #3 pieces to a #1 piece as shown to create a wedge unit. Sew 2 **A** 1-1/2" squares to adjoining sides of 1 **B** triangle to make a corner unit. Sew the corner unit to the wedge unit to make a quadrant unit, measuring 4" square raw edge to raw edge.



Repeat to make a total of 4 matching quadrant units.

2. Sew 2 quadrant units to the opposite long sides of (1) 1 1/2" x 4" **B** rectangle to make a half block. Repeat to make a total of 2 half blocks.



Sew (2) 1 1/2" x 4" **B** rectangles to the opposite sides of (1) 1 1/2" x 1 1/2" **A** square to make a center unit.



3. Sew 2 half block units together with a center unit to complete 1 block.





# Flower Shower

4. Repeat to make the indicated blocks and half blocks for the following fabrics.

**B** - 9 whole blocks

**D** - 4 whole blocks

**E** - 4 whole blocks

**F** - 5 whole and 2 half blocks

**G** - 9 whole and 5 half blocks

**H** - 4 whole and 3 half blocks

**I** - 6 whole and 5 half blocks

**J** - 3 whole and 4 half blocks

**L** - 7 whole and 4 half blocks

**M** - 2 whole and 2 half blocks

**N** - 11 whole and 7 half blocks



# Flower Shower

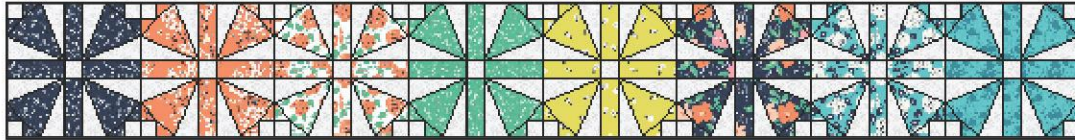
## Quilt Center Assembly

1. Arrange and sew together (8) whole pieced blocks to make a pieced row.

Row 1



Row 2



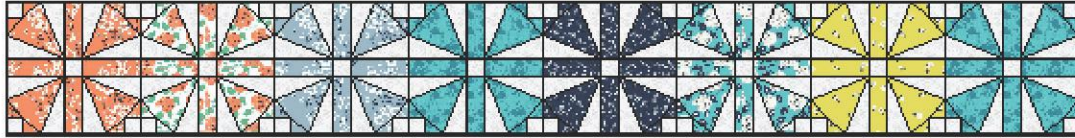
Row 3



Row 4



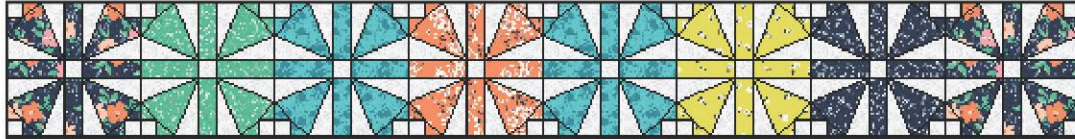
Row 5



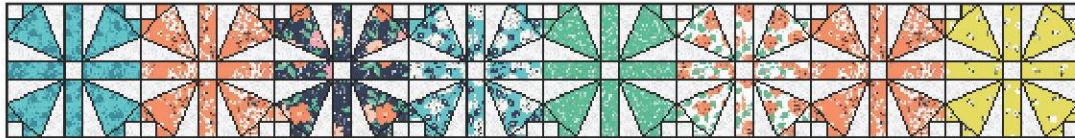
Row 6



Row 7



Row 8

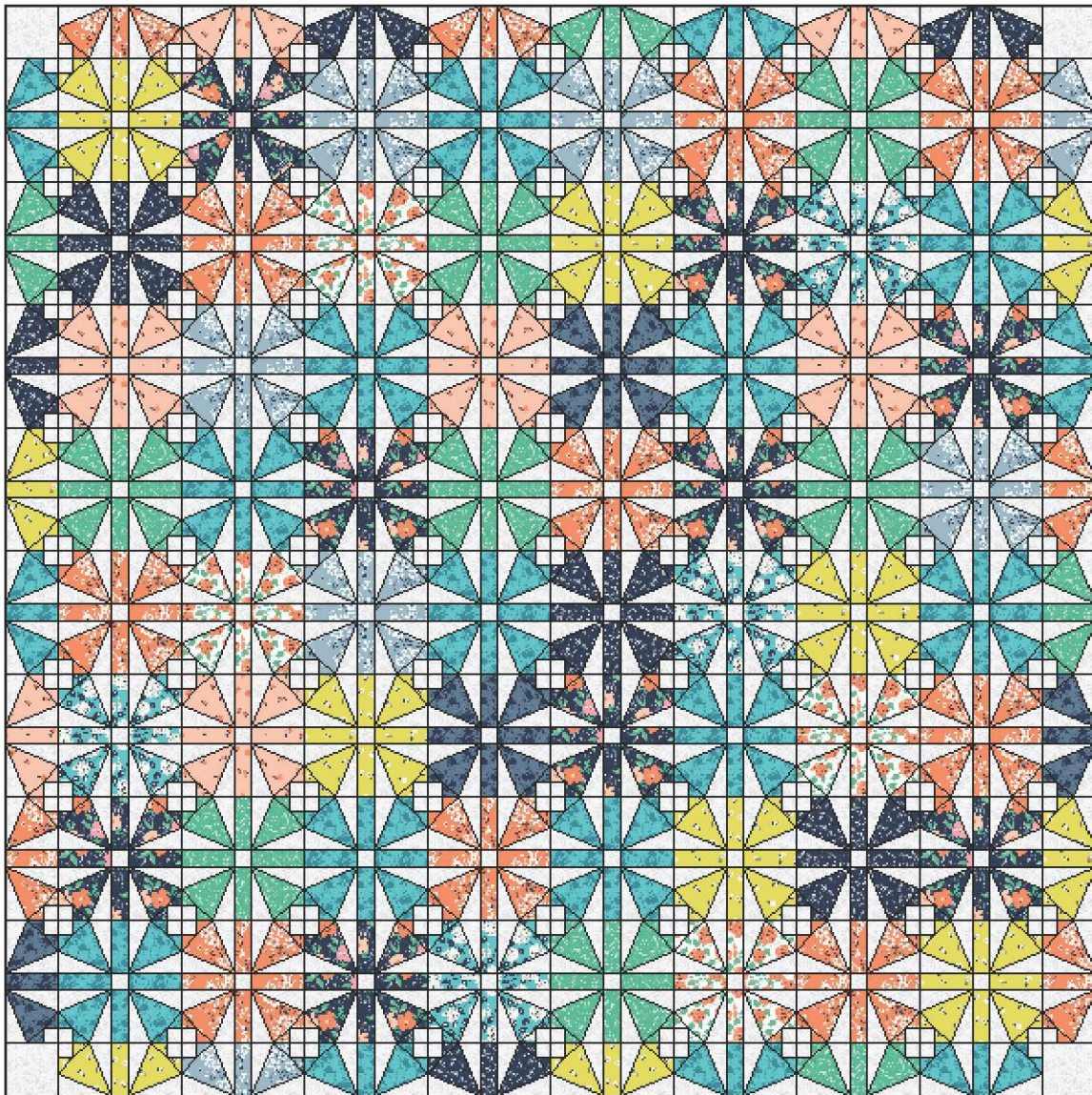


Sew the rows together to make quilt center.



# Flower Shower

2. Arrange and sew together 8 half pieced blocks to make a pieced column, and sew columns to the left and right sides of quilt center.
3. Arrange and sew together (8) half pieced blocks to make a pieced row. Add (2) 4" x 4" **A** squares to the opposite short ends of the row. Repeat to make a total of 2 pieced rows, and add to the top and bottom of quilt center.

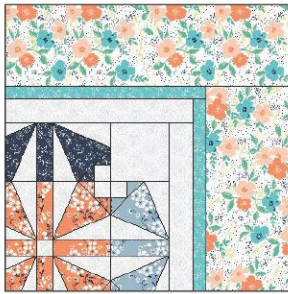




# Flower Shower

## Quilt Top Assembly

1. Inner border #1. Sew (2) 2" x 71 1/2" **A** strips to the opposite sides of quilt center, followed by (2) 2" x 74 1/2" **A** strips to the remaining opposite sides.
2. Inner border #2. Sew (2) 1 1/4" x 74 1/2" **K** strips to the opposite sides of quilt center, followed by (2) 1 1/4" x 76" **K** strips to the remaining opposite sides.
3. Outer border. Sew (2) 5 1/2" x 76" **C** strips to the opposite sides of quilt center, followed by (2) 5 1/2" x 86" **C** strips to the remaining opposite sides to complete quilt top.



## Quilting Instructions

With the backing fabric laying taut, place batting and then quilt top to form quilt sandwich. Baste sandwich. Quilt as desired. Bind to finish quilt using (8) 2 1/4" x WOF **O** strips.



